

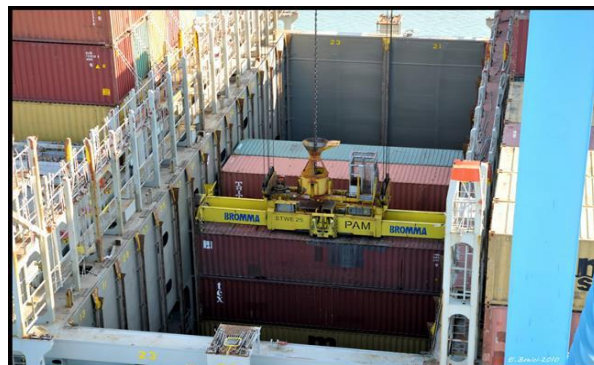
Week volumes (TEU): 3'340 Week Call number : 10

Key Performance Indicators

Productivity	Week	2016 average
Containers / hour	22,80	22,80

Fluidity	Week	2016 average
Average waiting time by truck	24	22

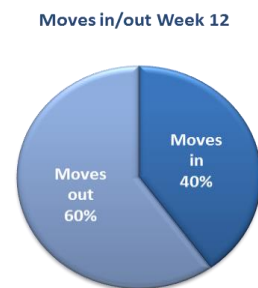
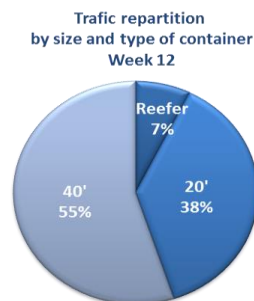
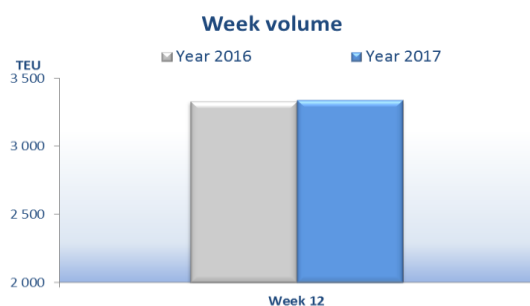
Reliability	Gantry	Straddle Carrier
Handl. Equipment availability	98,69%	78,17%



Road	Week	2016
Containers on trucks	1 378	12 952

Rail	Week	2016
Containers on train	353	3 620

Activity evolution



Line : From May, 4th, Medcar Line will call Med Europe Terminal with a weekly fix day operation (Thursday), providing maritimes services between the Med and Central America, a reefer service with prompt transit time and a full coverage of East Med range via Tangers.

Ligne : A partir du 4 mai, le service Medcar escalera chez Med Europe à jour fixe (le jeudi), reliant l'Europe et l'Amérique Centrale, offrant un court transit time pour les conteneurs frigo et permettant de couvrir le marché de l'East Med.

Save the date : Antwerpen, 24 to 26 April : Med Europe will be there with Via Marseille Fos for the largest project cargo and breakbulk exhibition. Med Europe has the technican expertise and skill to intensify this activity and intends to make it known. To meet us, [click here.](#)

Rendez-vous à : Anvers, du 24 au 26 avril, aux côtés de Via Marseille Fos pour le grand rassemblement colis lourds et projets industriels. Med Europe a le savoir faire pour développer ces activités et compte bien le faire savoir. Pour nous rencontrer, [cliquez ici.](#)

Save the date : The very first Maritime CIO Forum Med will be held in Marseilles on 4 April. Session four will tackle how to harness the digitalisation of shipping to deliver innovation and opportunity.

Rendez vous : Le Forum CIO Maritime se tiendra à Marseille le 4 avril. L'accent sera mis sur la numérisation du transport maritime, comment exploiter les opportunités et relever les défis apportés par les progrès technologiques.

THE figure of the week

14

ports called with Medcar Line such as : Pointe à Pitre, Fort de France, Cartagena, Manzanillo, Moin, Turbo...

Med-Europe, Your Euromediterranean terminal in the heart of Marseille

Trade mark of Intramar SA & STS for its Bulk & containers activities

Headoffice : INTRAMAR SA - Enceinte portuaire GPM - Porte 4 - BP 68 - 13315 MARSEILLE Cedex 15-France

Tél. : +33 (0)4 91 09 60 01 - Fax : +33 (0)4 91 09 60 05- info@medeurope.fr

<http://www.med-europe-terminal.com>